

KIC

Excellence in Cryogenics

Kryo Bot Model KBHE Dewar Contents Manager



SAFE and RELIABLE
FULLY AUTOMATIC
FAST DELIVERY
WORLD-WIDE SUPPORT

FEATURES:

- PLC and Touch Screen Controls
- Compatible with Level Sensors
- Monitors Pressure, Temperature, and Level
- Operates Transfer Valves

APPLICATIONS:

- Commercial Helium Dewars
- Cryogenic Storage Systems
- Bio-Storage Tanks
- Gas Management Systems

How does a Kryo Bot work ?

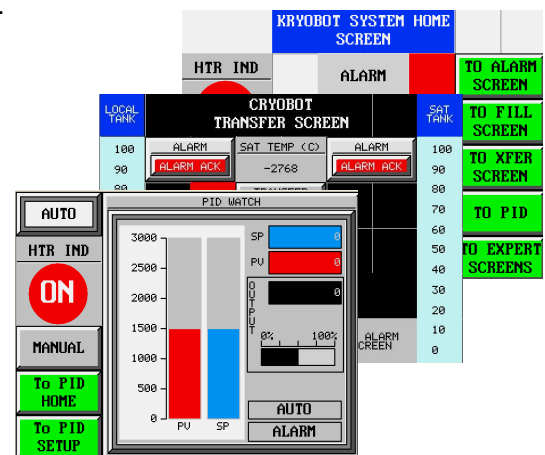
The model KBHE manages the contents of a Helium Dewars monitoring and controlling the pressure within the storage vessel. A PID loop controls drives a “drop-in” heater maintaining a user selectable pressure. Level and temperature are displayed. Venting and decanting valves can be controlled to maintain a required level and pressure limits.

DETAILS:

203^W 161^D 414^H mm and 3 kg
See Data Sheet for Additional Information
230 VAC 50 / 60 Hz, 2,000 Watts (max)

OPTIONS:

Back plane attachments, 19” rack package, optional level sensor, custom software, data logging signals, heater size



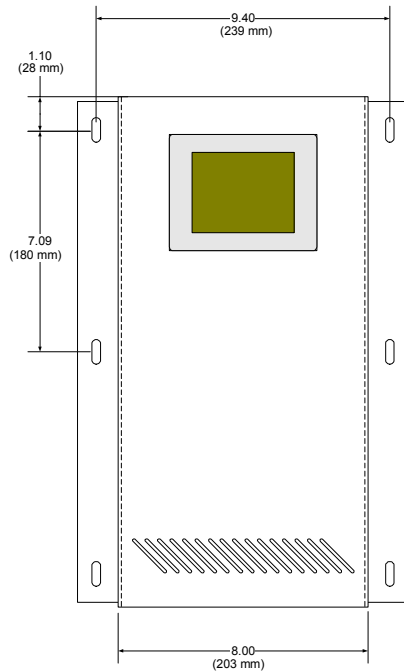
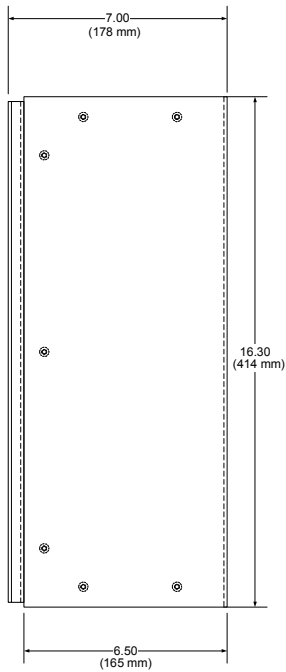
Kelvin International Corporation

709 Middle Ground Blvd ** Newport News, VA 23602 ** USA
Tel: 800 8 KELVIN +757 833 1011

Fax: +757 833 8600

info@kelvinic.com
www.kelvinic.com

No	Function	Description
1	Pressure Control	Operator sets the pressure (SP) set point as the PID control loop drives a heater in the dewar to maintain the SP. The loop parameters can be selected by the user, as needed. The dewar pressure as a process variable (PV) is displayed on the touch screen.
2	Level Sensor	The fluid level in the dewar (and an additional target dewar) are monitored by the touch screen. It is possible to effect fluid transfers by using the output signals. The KBHE accepts any 0-5 VDC signal from most level sensor instruments.
3	Temperature Monitor	A type T-TC is embedded in the heater assembly so that the cartridge operate below a heat flux of $0.5W / cm^2$. The value is displayed on the touch screen.
4	Low Level Safety	A user selectable low level can prevent the heater from operating in a near empty dewar.
5	Temperature Safety Limit	A user selectable temperature can prevent the heater from operating in a run-away condition, in an empty dewar, or while performing tank maintenance.
6	Valve Controller	Three 24 VDC solenoid valves can be programmed to decant, vent, and fill the dewar.
7	Pressure Sensor	A 0-3000 mbar pressure sensor provides for the signal that is displayed at the touch screen. Other pressure ranges are available as a special order.



SOLD BY: