

Standard LN₂ Transfer Systems



Product Description: A portable LTS-10A dewar is wheeled next to a Semiconductor Tool, SEM, or other LN₂ detector. During the next several weeks, LN₂ is automatically monitored and delivered to the detector target dewar by the Touch Screen controls and the KIC provided level sensor inside the customer's dewar.

When the portable dewar reaches the prescribed low level, an alarm will alert operator to refill the portable dewar. At all times, the detector continues to operate as the KIC controls protect the detector with user-configurable alarms and safety contacts.

Touch Screen Enclosure

40^W 23^D 40^H cm 55 kg

Typical Installation:

A clean room tool receives LN₂ by the overhead conduit from the Control box and portable dewar

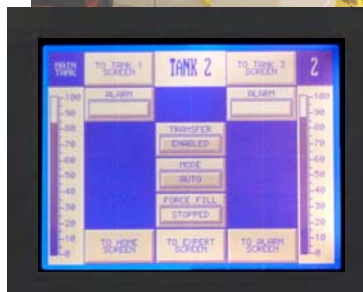


50 Liter Portable Dewar

50^W 50^D 105^H cm 55 kg

Features and benefits:

The Touch Screen controls provide level bar-graphs for each dewar. Operator can select limits, levels and modes of operation by simply calling up the desired X-Pert Screen. Operation in Manual, Automatic, and Quiet mode are possible. Electrical contacts shut-off high voltage circuit. Audio and visual alarms show fault mode temperature and disconnection of cables.



The KIC provided CLS-55-TT technology is used to monitor dewar levels and temperature limits. Additional information is provided at the KIC web site.

Configuring a System:

For new applications, customers must provide the following information to properly configure their automatic LN₂ delivery system. It is as easy as **1 - 2 - 3.**

1 Select Dewar Volume:

- 50 Liter with enclosure
- 120 Liter with enclosure
- Special: 300 or 500 Liter (horizontal)

2 Specify Transfer Line:

Length from controls enclosure to target dewar

3 Provide Dewar Details:

- Neck diameter
- Liquid column height
- Total depth of dewar



120 Liter Portable Dewar

65^W 65^D 130^H cm 80 kg



Special Horizontal Lab Dewars

Kelvin International Corporation

12650 Mc Manus Blvd Newport News, VA 23602 ** USA
Tel: 800-8-KELVIN +757-833-1011

Fax: +757-833-8600

info@kelvinic.com
www.kelvinic.com